

HONOR SOMEONE SPECIAL ON MOTHER'S DAY

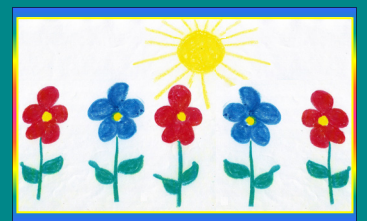
Celebrate Mother's Day With a Contribution to Bridgeway Behavioral Health's Domestic Violence Shelters, The Terry L. Robertson Center and The Women's Center or to Bridgeway's Sexual Assault Center

With each contribution of \$25 or more, Bridgeway will send a Mother's Day greeting card to honor or memorialize a special woman in your life with one of the following inscriptions:

*To Honor
You*



*In Loving
Memory*



In your name

I have made a Mother's Day contribution to
Bridgeway Behavioral Health's
Domestic Violence & Sexual Assault Programs
 Terry L. Robertson Center
 The Women's Center
 The Sexual Assault Center

This gift will help continue the important work of
offering safety, support and advocacy
to women and children who are survivors
of domestic violence, abuse or sexual assault.

On this day, it is important to recognize and remember women like
you who have touched and inspired my life.

With Love and Gratitude,
Happy Mother's Day

In memory of _____

I have made a Mother's Day contribution to
Bridgeway Behavioral Health's
Domestic Violence & Sexual Assault Programs
 Terry L. Robertson Center
 The Women's Center
 The Sexual Assault Center

This gift will help continue the important work of
offering safety, support and advocacy
to women and children who are survivors
of domestic violence, abuse or sexual assault.

On this day, it is important to recognize and remember women like
you who have touched and inspired my life.

In Loving Memory and Gratitude,
Happy Mother's Day

**MAKE THIS MOTHER'S DAY SPECIAL!
PLEASE USE THE ENCLOSED FORM TO
REQUEST A CARD WITH YOUR DONATION.**

The artwork on these cards has been created by children in Bridgeway's shelters,
whose lives have been affected by domestic violence.
Bridgeway is a 501(c)3 nonprofit; your contribution is tax deductible.

For more information: Call Sally Faith or Kathi Corbett at 636-916-3550,
Email Development@BridgewayBH.com, or visit us on the web: www.BridgewayBH.com
Bridgeway Behavioral Health, 1570 South Main Street, Saint Charles, MO 63303